



# OPPORTUNITIES AND CHALLENGES FOR SUSTAINABLE FOREST DEVELOPMENT

Techo Sen Russey Park of Royal Academy of Cambodia, Preah Vihear Province

---

**Dr. Chhim Sokhandara,**  
**TSRP Park Deputy Director**

**28-Oct-2019**

# Contents:

## **I. History**

## **II. Challenges**

## **III. Potentials and Opportunities**

# I. History

- Establishment: *By the Royal Decree N 0414/436 on 8<sup>th</sup> April 2014*
- Geographical location: *Chhaeb Pir communes, Chhaeb district, Preah Vihear province*
- Full of Natural and Cultural Properties

**ឧបសម្ព័ន្ធទី១ របស់ក្រុមការងារព្រំដែន**

**ផ្នែកទី១ តំបន់ជួរភ្នំបូក និងជួរភ្នំបាវ៉ាន**

**ផ្នែកទី២ តំបន់ជួរភ្នំបូក និងជួរភ្នំបាវ៉ាន**

ID	X	Y
A	540709	1527310
B	539893	1528642
C	539712	1534632
D	540800	1535258
E	542546	1536420
F	544259	1537504
G	545008	1536659
H	548085	1537657
I	555505	1535067
J	555569	1531594
K	549631	1531585
L	549634	1527310

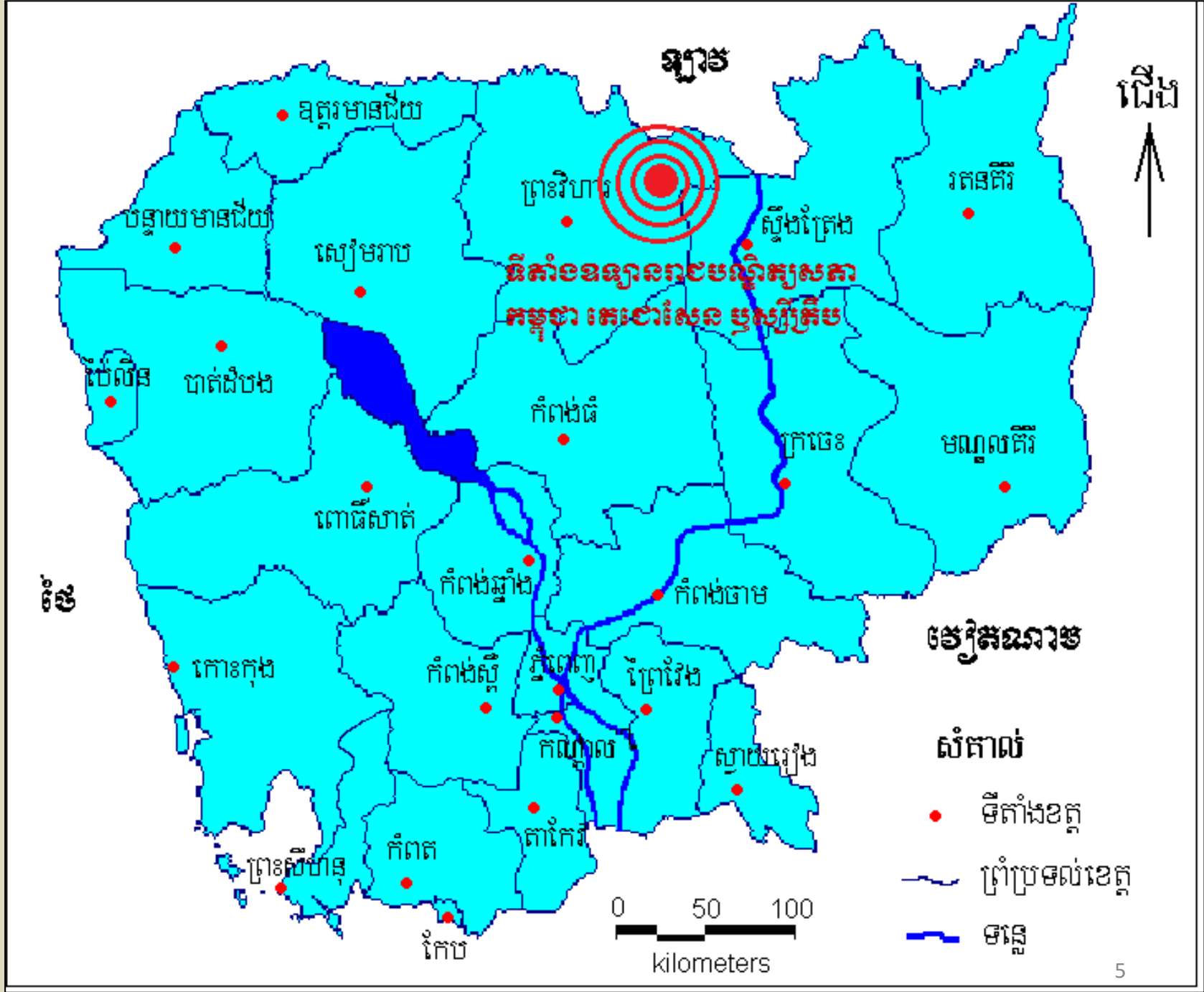
Coordinate System  
Projection: UTM  
Zone: 48N  
Map Datum: WGS 84

Legend:

- ចំណុចទីយោគា
- ព្រំប្រទល់ខេត្ត
- ព្រំប្រទល់ស្រុក
- ព្រំប្រទល់ឃុំ
- ព្រំប្រទល់ឧទ្យានជាតិ
- ដីសម្បទានសេដ្ឋកិច្ច
- ព្រំដែនសហគមន៍
- ព្រំដែនការពារ
- តំបន់អភិរក្សឆ្នាំ២០១០
- ព្រំដែនស្រែ
- ព្រំដែនពាក់ព័ន្ធនឹងស្រែ
- ព្រៃឈើស្ងួត
- ដីធ្លាស្រែ



- The park located in Preah Vihear province (60km from provincial town)
- 320Km from Phnom Penh



## II. Challenges

- **Nature:** Decrease of wild lives species(food, water, shelter...), illegal logging and poaching, climate change.



*Woods logged by Chinese company*

*(Almost 1000 ha. cleared and more than 500 ha.  
With Sugar cane planted by Chinese company)*



*RAC taskforce checked the illegal  
logging scene in the park*



**Socio-Economy: Private Sugarcane company infects the Park, Land clearance, illegal logging and poaching, illegal ambush, bushfires**



*Land clearance and encroachment  
by people in the park*



*RAC taskforce checked the  
cleared land in the park*





*Wildlife poaching*



*House built in the park area (30 families in 2016 increased to 88 families in 2017 on land size approx. 250-300 ha.*



*Bushfires*



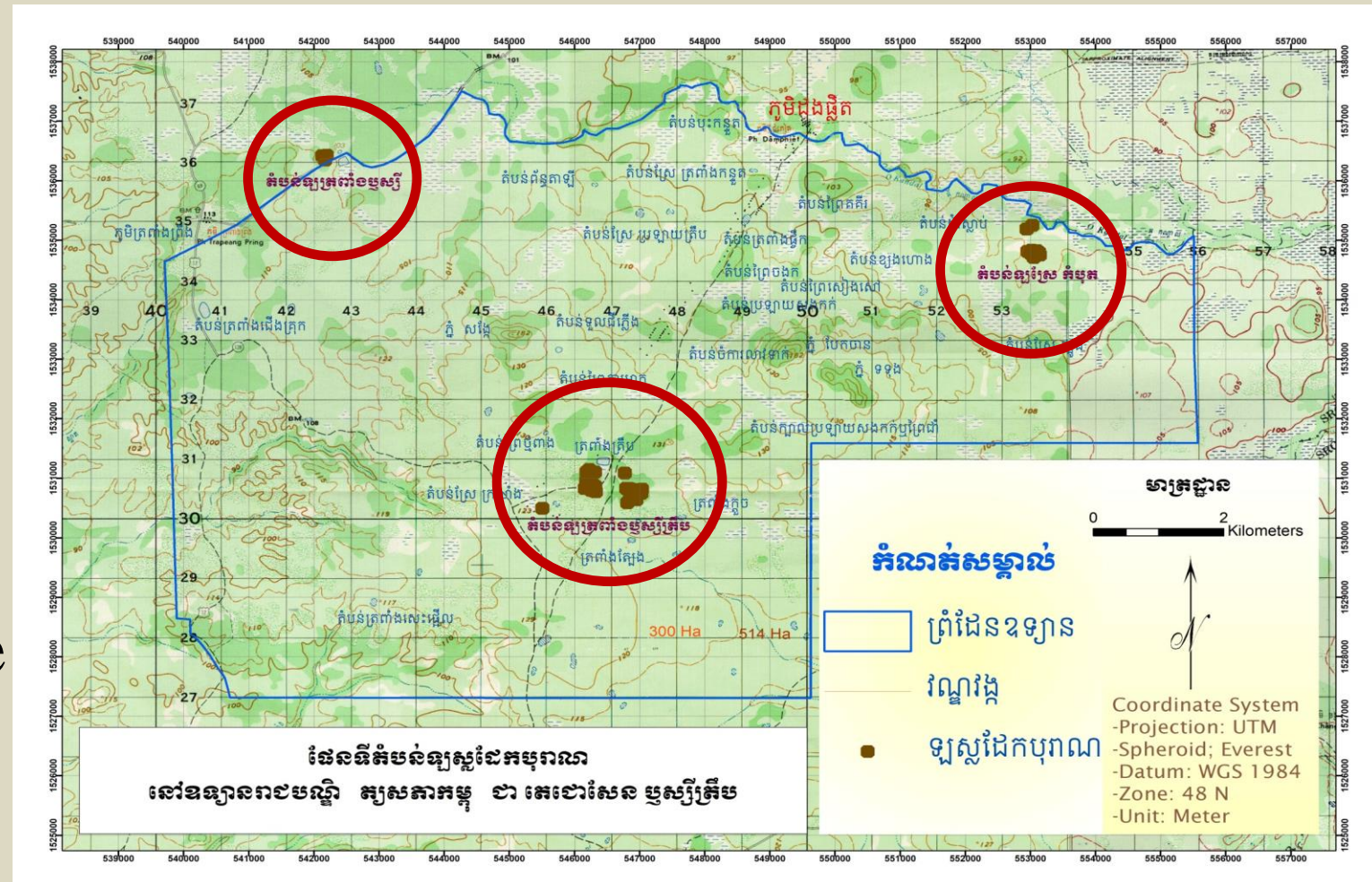




# Cultural Properties

# Map of smelting site clusters (Trapang Treb and Trapang Russey Treb)

- 43 smelting sites
- 17 smelting site ponds
- 64 ponds





*Air tube for iron forge, smelting furnace and iron slag.*



*Mounds of smelting furnace and iron slag.*



# III. Opportunities

## 1. Conservation Activities

- **Post demarcation of the park boundary:** Since its establishment, the park's team surveyed to identify the park's boundary. Ultimately the park's team finished the boundary post demarcation in mid-2016.



Post and boundary demarcation in 2017



- **Research on the park's potentials:** The park has cooperated with other institutions in RAC and others related stakeholders for park potentials researches, research on Tangible and intangible heritages, photomapping, bird species photograph, and Khmer Ancient Medicine.





- **Regeneration, cultural operation:** done some research on culture of Kouy ethnic minority, Kouy Martial art of Shield-fighting.





- **Control on non-timber products of the park:** The main traditional job of the neighboring community resin extraction, vine and mushroom collecting.



*Resin collected from the forest was packed in the bottles for sale*



*Burning resin tree (way of extracting resin from the tree)*



- **Protect of forest, land and ecosystem:** created rangers equipped with patrol facility, cooperate with forest administration and local authority. Over 100 species of birds are recorded.





- **Forest nursery and replantation:** In late 2017, the park started tree nursing and replanting project which plans to regrow 1 million trees in 6 years aiming to rebuild forest cover and contributing to reduce global warming.





- **Raise awareness of neighboring community:** Community education is our first phase in conservation projects. The park's team cooperated with commune authority, forest administration, environment officers, and district authority to conduct workshops.







Tree plantation ceremony attended by Prime Minister Hun Sen on 18<sup>th</sup> May 2018



**Wildlife rescue and raising:** Despite the conservation project in the forest, the park has project for wildlife recues and raising, wild pigs, wild deer, peacocks, and rabbits.





**Water Basins building:** Six ponds were dug inside the park to get water for wildlife during dry season. Every year, because of draught wild animals do not have enough water to drink, they seek water in the village and are killed by villagers.





- **Iron smelting site excavation and site museum:** This project provide the main support for nationalism, and encourage to have national pride for local people and nation, enhance and continue eternity for national cultural identity, technology, and tradition in particular and for the whole world in general.



Iron Smelting furnace excavation activities in September, 2019

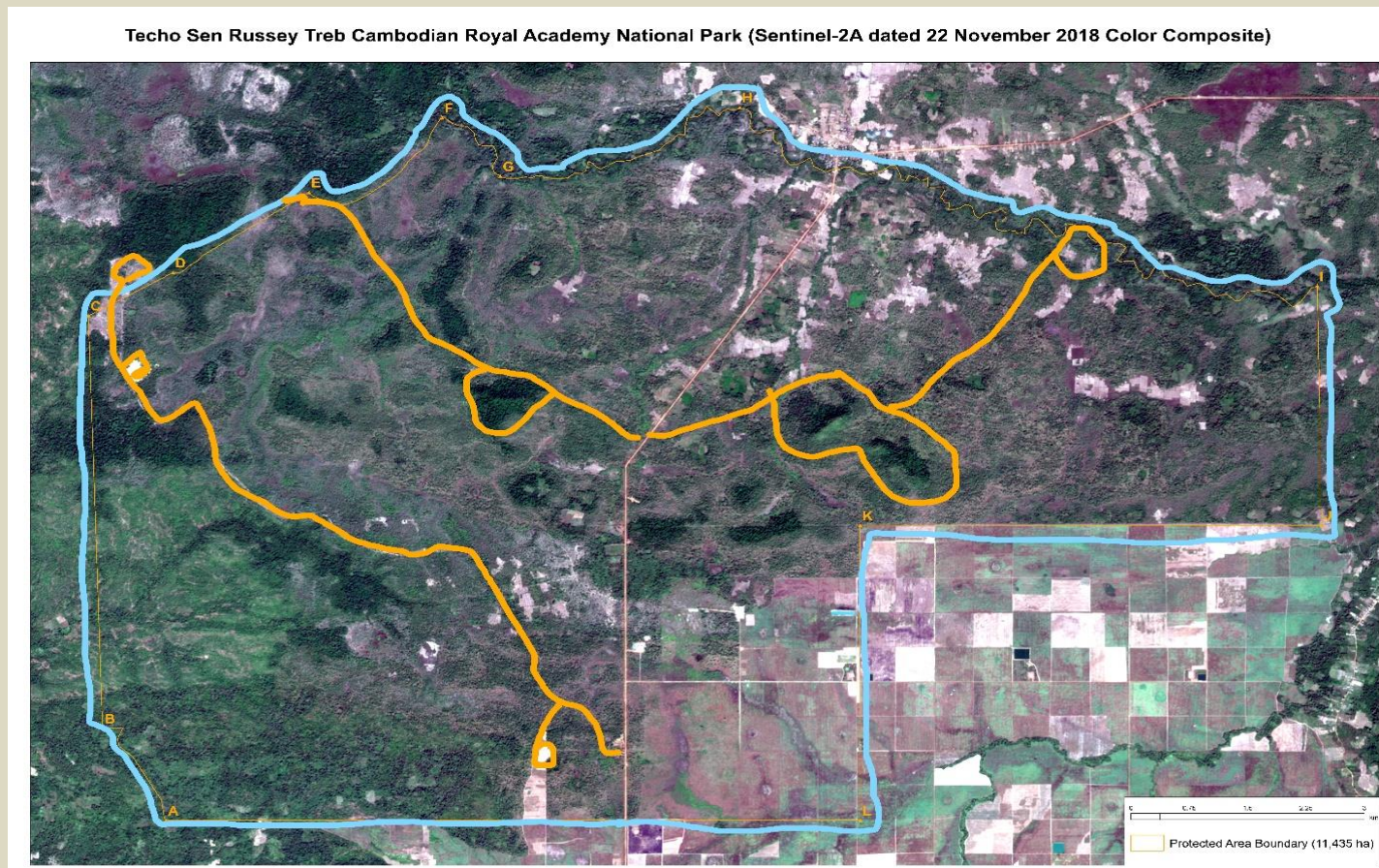


Iron Smelting Furnace Structure



## 2. Development Activities

- **Construction and maintenance of forest road:** The park team and engineering force of Prime Minister conducted survey to build ring road and circuit roads around the park boundary and main roads inside the park for tourists and patrol.





- **Construction of posts, park center, infrastructure:** Since 2017 the park team has built park center buildings, posts, and roads for staff office and dormitory. This also provides easy space for visitors, tourists, researchers, and students who come to experience the forest, camping, and culture study.



Infrastructure: building and roads...



- **Tourism promotion:** The park has created atmosphere for tourist to experience iron smelting sites, tourism destinations, and ecotourism by providing information, site seeing, camping, forest trekking etc.

- *University students camping and replanting trees.*





- **Dairy cow project:** Since May 2019, the park has started Dairy Cow project with 100 dairy cows in order to promote the production of dairy cows to enhance the economic efficiency of cow raising production in Cambodia via a proper breeding method.



Dairy cow farm house, grass fields and fresh milk products



- **Safari development project:** In mid-2018 the park has cooperated with B.M Nature Safari to create Safari in the park. This project aims to promote wildlife conservation and tourist sector in Cambodia.





- **Master Plan:** In July 2018, the park cooperated with KEI (Korean Environment Institute) to conduct workshops on Master Plan development in the park.



Workshops on Master Plan  
conducted with KEI





# *KEI Field Trip to the Park*





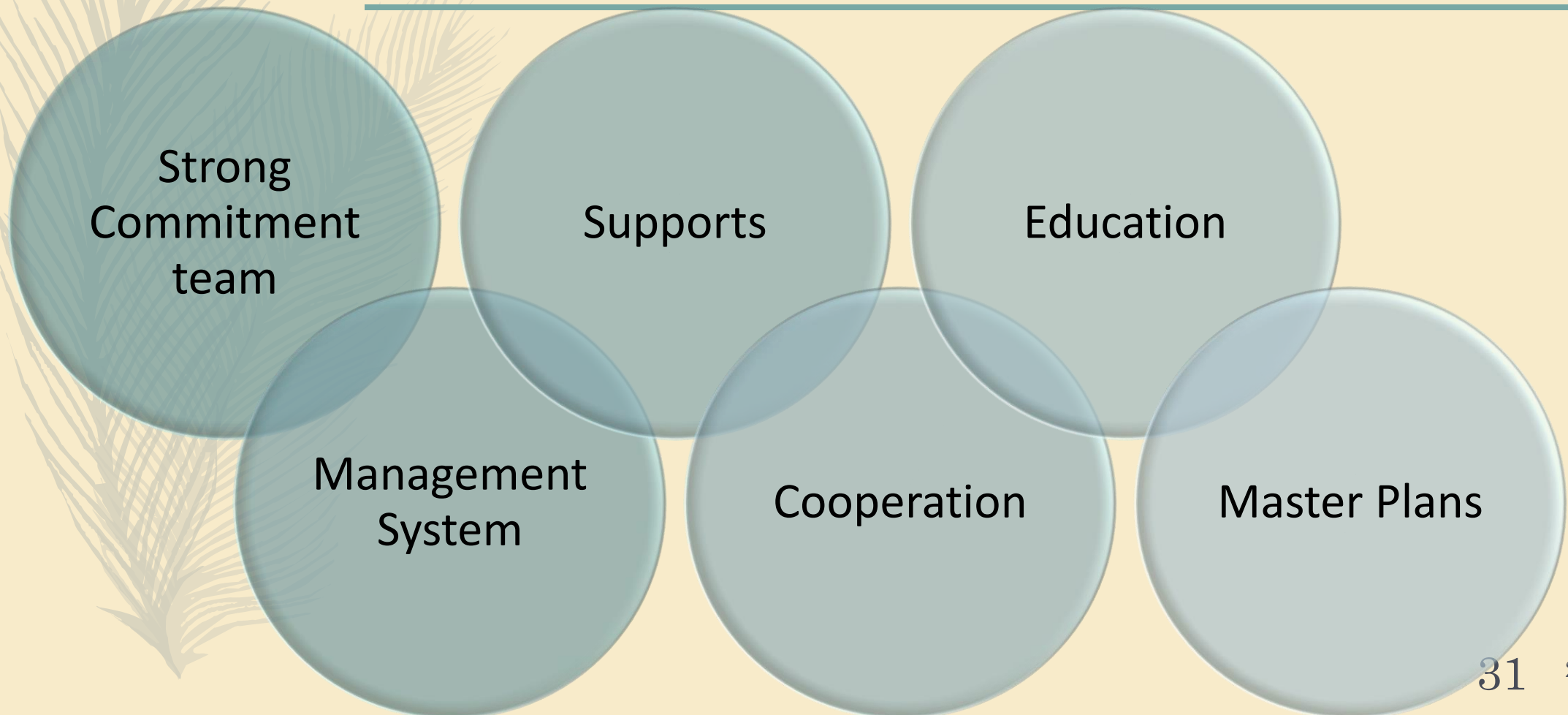
*1<sup>st</sup> Workshop on “Preliminary Study to Develop Master Plan” at Green Palace Hotel with 29 attendees from 2-5 July, 2018.*



*2nd Workshop on “Develop Master Plan of Russey Treb Park” will be held between 25<sup>th</sup> and 29<sup>th</sup> November 2019 at Daejeon, South Korea.*



# Conclusion





Thank you for your attention !

